

SUMMERBRIDGE DOORS & CABINETS

COMPANY OVERVIEW

WE DESIGN

WE MANUFACTURE

WE DELIVER

CONTENTS

*	3	BRAND SLOGAN
*	4	BRAND STORY
*	5	LOGISTICS
*	6	WHAT IS FSC?
*	7	ENVIRONMENTALLY CONSCIOUS
*	8	SUPPLIERS OF SUMMERBRIDGE
*	9	MARKETS & KEY CUSTOMER AREAS
*	10	MANUFACTURING PROCESS
*	11	WHY SUMMERBRIDGE?
*	12	CONTACT US

BRAND SLOGAN

WE DESIGN

We constantly refresh our designs to keep up to date with current trends, and we have a large range of door designs in a wide selection of finishes. We use only the finest quality raw materials in the manufacture of our products.

•

WE MANUFACTURE

We pride ourselves in being a British manufacturer. Although we update our designs, if you can't find what you're looking for, just ask, and we will endeavour to create a bespoke door to your taste. Our in-house designers have years' of experience and can turn your vision into reality.

•

WE DELIVER

We aim to exceed your expectations from the design and manufacturing process, through to supplying the finished product. Our dedicated and committed team will be attentive to all your requirements.

As a brand, we aim high to provide our customers with the service they deserve.

BRAND STORY

WHO WE ARE

SUMMERBRIDGE DOORS ARE ONE OF THE UK'S LEADING MANUFACTURERS OF KITCHEN, BATHROOM AND BEDROOM DOORS AND CABINETS.



FOUNDED IN

EAST YORKSHIRE IN

we are one of the top manufacturers and suppliers of MDF doors, with a strong emphasis on customer service, design and eco-friendly manufacturing processes.



LOCATED IN

HULL,

logistics & transport operation that delivers nationally. Summerbridge has 85 employees working in 80,000 sq. ft. state of the art production & manufacturing facility.



WE MANUFACTURE

STANDARD SIZE AND MADE

measure MDF kitchen and bedroom doors along with accessories to suit. With a large range of design and finishes, we are sure to have something to suit all tastes and budgets.



SERVICING OUR CUSTOMERS

- Responding to our customers needs is paramount
- Reliable delivery service
- Pride in our service & our ability to surpass client expectations
- Knowledgeable drivers with a 'customer first' ethos
- We deliver nationally - UK mainland
- Using our own fleet of vehicles



FSC

WHAT IS FSC? **FSC RUNS A GLOBAL FOREST** **CERTIFICATION WITH TWO** **KEY COMPONENTS:**

- **FOREST MANAGEMENT**
- **CHAIN OF CUSTODY**

"FSC licenses retailers and other end users to promote FSC labelled products. Their system allows businesses as well as consumers to identify, purchase and use wood, paper and other forest products made with materials from well-managed forests and/or recycled resources." - FSC

ENVIRONMENTALLY CONSCIOUS

As a company, Summerbridge is conscious of the environmental effects of deforestation and the detrimental effects this can have on the environment. Furthermore, our company has put in stringest measures to help reduce our carbon footprint.

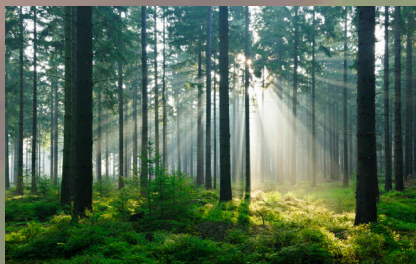
01

We became FSC Certified from the 30th May

We recycle wood and waste from the factory, this process enables us to both, power the plant as well as dispose of the waste.

We have moved to ABS type edging tapes. This is a much more eco friendly option, which means our waste can be recycled.

Summerbridge doors has a robust environmental policy to reflect our concerns over the sourcing of all our materials.



02

We source

Our main ingredient from chain of custody certified suppliers, and therefore, this comes with the guarantee that all materials are sourced from well-managed forestry.

We have also tailored our manufacturing processes to ensure that MDF dust and off cuts are burnt as fuel, and we recycle all of our waste.

Our offices and factory are lit by energy-efficient lighting, and we operate strict recycling methods followed by encouraging all our staff to limit consumption of paper.

All this helps to achieve a low carbon footprint across our business, and we constantly strive to keep improving in this area.

03

Serious about sustainability

As a company, we are proud to announce that we take sustainability seriously, allowing eco-friendliness becoming the core of our brand values, followed by the best customer service and design processes.



SUPPLIERS OF SUMMERBRIDGE

SUPPLY CHAIN



We continue to push the boundaries by sourcing new dynamic decors in both, MFC and vinyl's.

Enabling our customers to gain a competitive advantage over their rivals.

We use the latest decors from manufacturers such as:

- EGGER
- PFLEIDERER
- LIKORA
- HORNSCHUCH
- RENOLIT

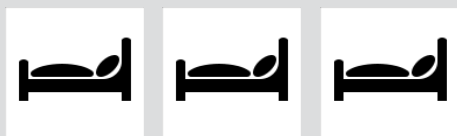


Markets & Key Customer Areas

Supplying products to several market sectors:



MERCHANT/DISTRUBUTOR/RETAIL



ACCOMMODATION/STUDENT ACCOMM/
HOTELS



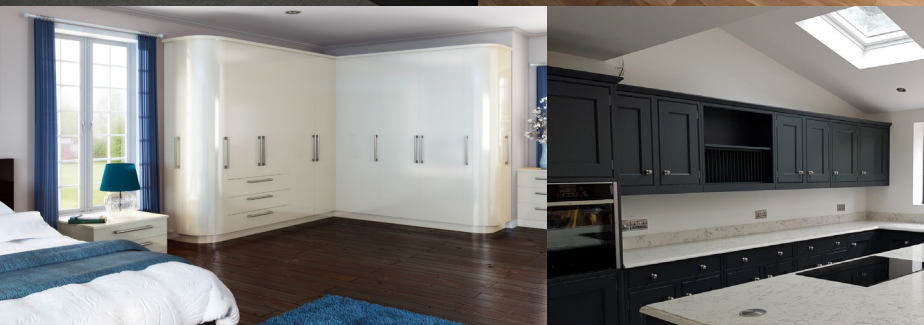
NEW BUILD AND REFURBISHMENT



LEISURE HOMES



EDUCATIONAL/OFF SITE



MANUFACTURING PROCESS

Wood manufacture in a multitude of options.

Specialist in a number of sectors.

- Combine innovative design with practical engineering via our state of the art CAD system.
- Develop on trend, quality products whilst value engineering and delivering on time.
- Working with a range of materials
 - MFC, MFMDf, MDF, MRMDf, FR-MDF, HPL Pre Bonded, vinyl pressed product.
- Our 80,000 square foot facility holds some of the latest Biesse and SCM equipment including:
 - 3 Axis CNC's
 - CNC Beamsaw
 - Inline Edgebanders
 - Multi-drilling machines
 - Stand-alone Membrane Presses
 - Member press with full automated finishing line
 - CNC adhesive spray finishing system
 - Winstore stock management system

WHY SUMMERBRIDGE?

WHAT MAKES SUMMERBRIDGE DIFFERENT?



Originated as a family run business, we pride ourselves on our relationships and reputation with our valued customers.

Our flexibility and ability to quickly turnaround small or large projects, on time and in full.

We're able to deliver to branch, showroom and site.

Our on-going commitment to offering the best value for British built KBB products.

With knowledgeable and well-motivated people, we are an ideal partner for your business!

SUMMERBRIDGE DOORS & CABINETS

CONTACT US



**HUMBER DOORS LTD
26 Springfield Way
Anlaby
East Yorkshire
HU10 6RJ**

**Tel: 01482 505566
Fax: 01482 503877
Email: info@summerbridge.co.uk**

**Co Reg. No. 11652290
VAT No. GB 308 3006 40**

summerbridge
doors & cabinets

2020